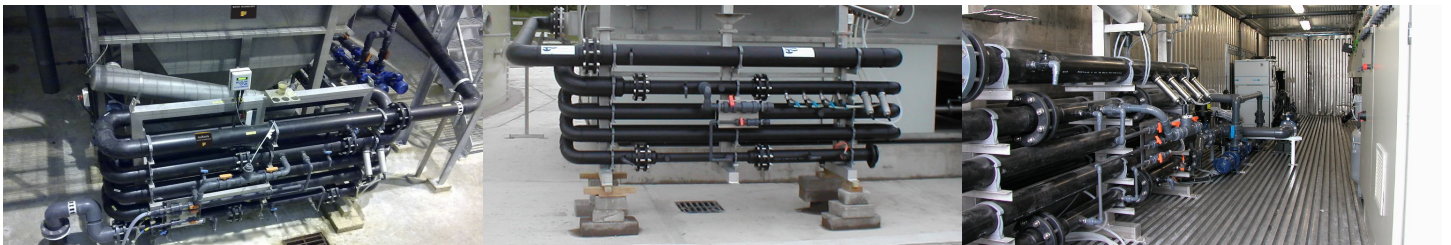




FLOCCULATOR PFR

FOR MIXING WASTEWATER
WITH CHEMICALS



Flocculator

Nijhuis Water Technology has designed a flocculator for mixing wastewater with chemicals.

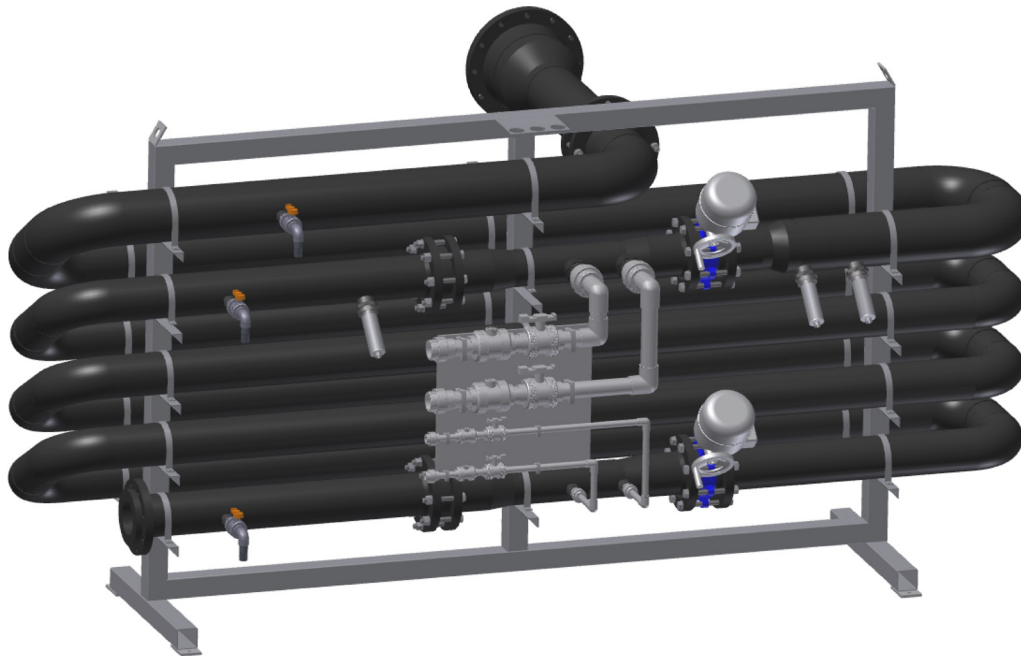
Applications

Chemicals are used in wastewater treatment systems to:

- Break emulsions by coagulation.
- Precipitate metals.
- Enlarge separability of flocs by flocculation.
- Neutralization.

Advantages & Characteristics

- Design of flocculator based on wastewater and chemical types used.
- Compact design.
- Completely pre-assembled.
- Construction of PE.
- HDPE or stainless steel materials on request.
- Accurate mixing results in uniform floc growth.
- No back mixing.
- No power required for mixing.
- Minimal chemical consumption.



Technical description

The chemicals will be dosed into the pipe flocculator. The pipe flocculator is equipped with special mixing pipes which take care of perfect mixing of the chemicals with wastewater.

The pipe flocculator is designed specially for every specific type of wastewater because mixing energies and mixing times are unique for different wastewaters.

Each flocculator design is client specific, exact dimensions will be calculated during detail engineering. Larger capacities are available on request

Depending on the application the flocculator will be equipped with the following:

- Mixing pipes.
- Dosing points.
- Sample points.
- By pass for pH measuring and control device.

Nijhuis Water Technology has also a range of dosing equipment and chemical make-up equipment available.

Type	Capacity m ³ /hr	Length mm	Width mm	Height Empty - Full
PFR 005	3,5 - 6	2400	200	780
PFR 010	6 - 10	2400	225	830
PFR 015	10 - 15	2400	250	910
PFR 020	15 - 25	2800	325	1150
PFR 030	25 - 37	2800	400	1190
PFR 045	35 - 50	2800	450	1300
PFR 060	45 - 65	2800	450	1400
PFR 080	65 - 90	3700	550	1400
PFR 100	85 - 120	3700	600	1550
PFR 140	105 - 160	3700	750	1750
PFR 180	140 - 210	4400	850	1900
PFR 240	180 - 270	4400	900	2000
PFR 300	240 - 350	4400	1000	2100